



Elim[®]
We Are Connecting.



2024-2025 Impact Report

ELIM CHRISTIAN SERVICES EQUIPS PEOPLE WITH DISABILITIES TO PURSUE THEIR GOD-GIVEN POTENTIAL.

- MISSION** Elim equips people with disabilities to pursue their God-given potential by offering person-centered services and partnering with their communities.
- VISION** People with disabilities thriving in their communities.
- CORE VALUES**
We are Christ-centered.
We all have value and purpose.
We are a learning and sharing community.



WE ARE CONNECTING.

I am pleased to present to you your **2024-2025 Impact Report**, which testifies to God's faithfulness to Elim. The theme for this year's Impact Report is "**We are Connecting**", which is such an appropriate theme for Elim because connection has and continues to be at the core of God's design for Elim.

Elim's heartbeat is and always will be **the remarkable ways that God uses Elim's amazing staff to make life-changing connections** with their students and adult participants. The mutual love and dedication that emanate from those connections is Elim's response to Matthew 22:36-39.

Notably, this past year has seen how God continues to bless the deliberate investments Elim is making in supporting our dedicated staff. **I am pleased to report that employee experience at Elim has increased by 9 points to 71 this past year!** This remarkable improvement allows Elim to enroll more students from our waiting list. God is good!

This Impact Report also testifies to God's faithfulness to Elim financially. As you can see in this report, Elim once again finished favorably to budget in 2024-25. **This is a gift from God that empowers Elim to continue providing the highly specialized services it is uniquely equipped to provide.**

I pray that you are blessed and inspired by the vital role you play in making this Impact Report possible. It is a testimony to how Elim is intentional about living out its call to make life-changing connections that bring honor and glory to God.

Thank you for being a part of making those connections with us!




Bill Lodewyk | President

Elim Christian Services: Our Year in Review 2024-2025



JULY 2024

The Learning Team ramped up their Clifton Strengths training with group workshop activities for staff members!



AUGUST 2024

Our Adult Services had a wonderful day filled with activities like games, music, and dancing during their Annual Picnic!



SEPTEMBER 2024

The 28th Annual Dutch Festival brought many new and old friends to Elim, helping us to raise over \$220,000 for our students and adults!



OCTOBER 2024

Our students had the opportunity to go out into the community and engage in some fun Fall-themed outings!



NOVEMBER 2024

HR showed their appreciation for all of the Elim staff's hard work and dedication by providing delicious Thanksgiving lunches to everyone!



JANUARY 2025

Our adults visit Navarro Farms to take care of farm animals and start planting their garden by picking out seeds to sow!



FEBRUARY 2025

HR hosted an after-work paint party for staff members. They all created beautiful masterpieces together!



MARCH 2025

Adult Services hosted their monthly Impact Day, celebrating and awarding a few Elim adults every month and highlighting their accomplishments in the community!



APRIL 2025

Our students' creativity and talents shined through as they performed their favorite songs during the School's annual Lip Sync Battle!



MAY 2025

From hearing inspiring speakers during Learning Day at Trinity Christian College to the successful 15th Annual Elim Eagles' Wings 5K, May was packed with incredible events at Elim!



DECEMBER 2024

To celebrate the Christmas season, students and school staff came together for an afternoon filled with singing carols, worship, and dancing!



JUNE 2025

Staff enjoyed Elim's annual Donut Day, a sweet reminder from HR that we "donut" know what we'd do without them!

CONNECT.

ENGAGE.

“

Elim is a great place to work because watching students grow and learn and experience joy is **the most wonderful feeling in the world.**

—School Staff Member

”

“

I believe there is a hidden gift in every person with disabilities, and part of our job is to unbury the treasure within them. People focus on the disability of our adults, but they have so many abilities and contributions to make—it’s not about their restrictions, it’s about the **many gifts and talents that are hidden inside** that our program HOPE Packs brings to the surface.

—Adult Services Staff Member

”

“

Being a special needs parent is the most overwhelming job I could ever think of, but **Elim provides that support.** Like when you are feeling that isolation and feeling like it is a lot, **they give you that breath of fresh air that you are not in this alone,** and we’ll figure this out.

—Elim Parent

”

“

Now that we are personally involved at Elim, we see just what a phenomenal organization it is. We can’t help but support them, and **we can’t help but tell other people what great things they are doing.**

—Elim Parent

”

At Elim, we believe that every person has been made in God’s image and can reach their God-given potential. **One of Elim’s adults, Cher, is a wonderful reflection of Elim’s core values.** For the past seven years, she has been at Elim sharing her joy and generosity with everyone around her!

Cher’s upbeat disposition shines through in everything she does. One of her greatest passions in life is dancing — and she will never miss an opportunity to share her dancing skills with those around her.

She is passionate about dancing, taking line dance classes when she is able, and never missing an opportunity to hit the dance floor at one of the many Adult Services parties.

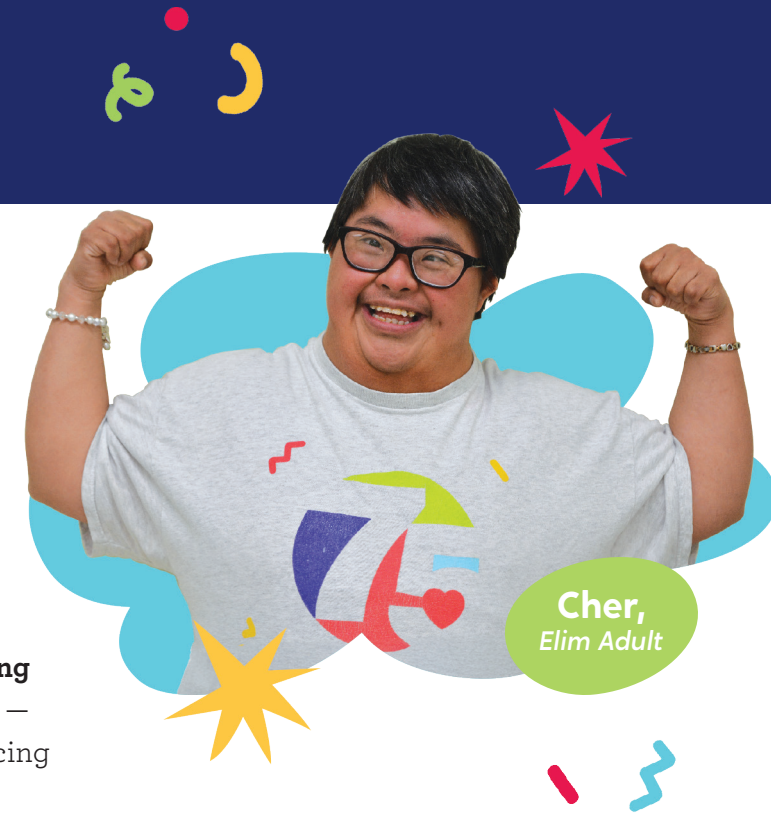
“Sometimes I need to take breaks from dancing,” Cher shares.

“Cher has just blossomed at Elim,” Tricia, Cher’s case manager, tells us. “She was already a kind and loving person before coming to Elim, but being at **Elim has been a great fit for her personality, in giving and spreading her joy to others.**”

Her kindness knows no bounds—from participating in Special Olympics fundraisers to being deeply involved in Elim’s HOPE Packs program, **she wants to give back to others** and make a difference in people’s lives.

“I like helping people,” Cher says when asked about how it feels to be able to participate in these different programs. **One of her favorite parts of working with Elim’s HOPE Packs is getting to deliver school kits** to various groups of students in the Chicagoland area with all of her friends at Elim!

It’s clear that God has put Cher on Elim’s path to spread her generosity and kindness to others. **Cher’s testimony to faith and service is a gift to us, and we are grateful she is a part of our Elim family.**



THRIVE



Tim, *Elim Staff*

When you think of someone dedicated to both their work and the people they serve, **Tim Griffin comes to mind. For 35 years, he has been committed to Elim's mission**, shaping its future through many roles.

He began as a paraprofessional in Geneva, Illinois. During that school year, Elim offered him a job as a high school teacher. But his work didn't stop there—Tim also drove buses and worked weekend security in Elim's old dorm building, Kamp Cottage. "Working at Elim really opened my eyes," Tim shares. "**Out of the spectrum of offerings in special education, Elim is just a place that really meets a niche.**"

After 17 years of teaching, Tim moved into leadership as Assistant Principal of High School. When Kamp Cottage closed, it became the home for Elim's Bridges Transition program. What we now know as **Crossroads became Tim's focus for the next 18 years**—and he even named the program himself.

He never expected to stay that long, originally planning to teach at Elim for only two years. What changed his mind? "**Elim is really the students' school.** They have their own prom, they have their own dances, they have their 'own, own, own'. And sometimes being integrated into a regular school setting, they can be a part of a school that other people really own. Other students own those schools, but this is really theirs, and that is really what has made me think 'I want to stay.'"

Memories of "little wins" have stayed with him. "I celebrate the little things because they are HUGE to us!" Whether it's a student holding the door or vocalizing for the first time, these moments matter. Elim's first prom also stands out: "**Our students really know how to celebrate life and have fun. They just come with all of who they are.**"

Supporting staff has been just as important to Tim. With monthly meetings and an open-door policy, **he encourages collaboration and honesty.** "If I know my staff feel like my office is a place they can come and not feel like they always have to have it together every minute of the day, then they serve the students better."

Tim's leadership reflects what makes Elim special: staff who give their all so students and adults can reach their God-given potential. For 35 years, Tim has helped create a place where everyone belongs—and he continues to show up every day with the same deep commitment.

131,123

HOPE Packs sent to provide food, school supplies, and messages of HOPE

196

students are served on Elim's campus.

92

different school districts send students to Elim for essential services

195

adults attend Elim's Adult Services program

30%

of our employees have worked at Elim for 10 or more years!

10%

of our students travel from over 30 miles away to get to Elim!

42

states represented by our donors—not just Illinois or Indiana.

406

staff members directly support Elim's mission

100%

of Elim's students and adults rely on the year-round, life-changing programming you help provide!

31%

of our dedicated employees are paraprofessionals!

CONNECT ENGAGE THRIVE

WE ARE Elim[®]

Thank you for your partnership in Elim's mission!
 Because of you, children and adults with disabilities at Elim, in your community, and worldwide are being equipped to reach their full potential. Here are other ways to get involved in this life-changing work:

VOLUNTEER
 Join us for a one-day event or for a weekly opportunity and experience Elim and its mission in a whole new way! Learn more at www.elimcs.org/volunteer.

GET YOUR CHURCH, BUSINESS, AND SCHOOL INVOLVED
 Get involved in a HOPE Packs campaign or explore other opportunities at www.elimcs.org/get-involved.

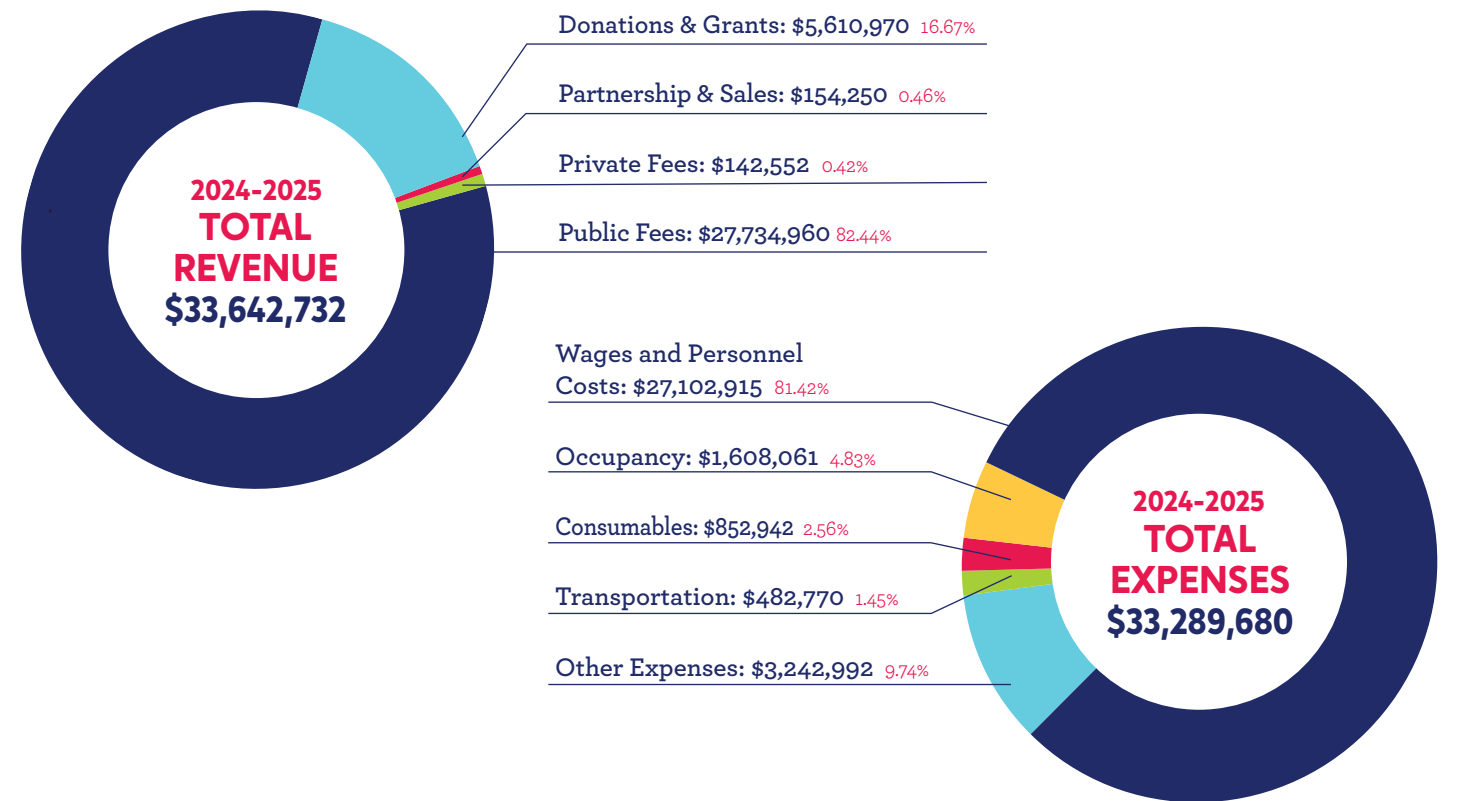
JOIN THE ELIM LEGACY SOCIETY
 Elim Legacy supporters are individuals that have decided to leave a legacy at Elim by giving a planned gift or by naming Elim Christian Services as a beneficiary in their will. If you would like to join the Elim Legacy Society, please contact Brian Page (708-293-6513) or you can contact Elim's partner agency, the Barnabas Foundation (toll free at 888-448-3040). The Barnabas Foundation can help you plan your gifts for maximum impact.

To find a list of all gifts made in honor or memoriam, visit: elimcs.org/AnnualReport
 Thank you for your generosity in support of our mission!

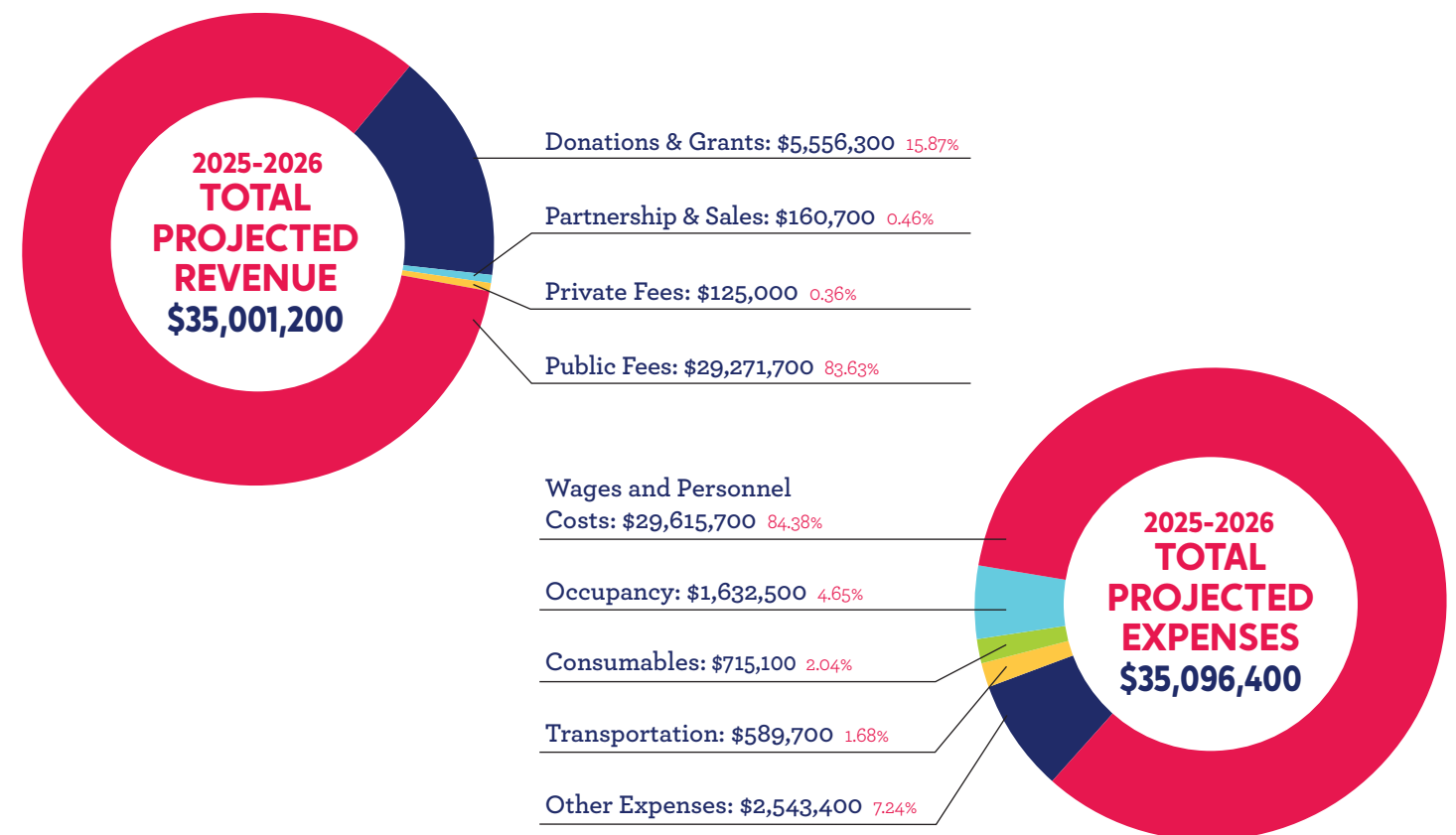
Connect. Engage.

Thrive.

OUR FINANCIAL STATEMENT 2024-2025



OUR FINANCIAL PROJECTIONS 2025-2026





TOGETHER, WE ARE CONNECTING.

Your partnership is crucial to Elim's mission. Thank you for your kindness and generosity! Please give today at elimcs.org/donate



13020 S Central Avenue | Crestwood, IL 60418
708.389.0555 | elimcs.org