



**Elim**  
We Are Celebrating.



2022-2023 Impact Report

## ELIM CHRISTIAN SERVICES EQUIPS PEOPLE WITH DISABILITIES TO PURSUE THEIR GOD-GIVEN POTENTIAL.

**MISSION** Elim equips people with disabilities to pursue their God-given potential by offering person-centered services and partnering with their communities.

**VISION** People with disabilities thriving in their communities.

**CORE VALUES**  
We are Christ-centered.  
We all have value and purpose.  
We are a learning and sharing community.



## WE ARE CELEBRATING.



The theme for this year's Impact Report, our 75th by God's grace, is "We are Celebrating." And there is indeed so much to celebrate as we step in faith into our next 75 years!

In 2 Samuel 6 and 1 Chronicles 15, King David danced with an uncontrollable exuberance because of God's faithfulness in bringing back the ark of the covenant. While our dancing over Elim's 75 years might differ from David's, our gratitude for God's faithfulness is no less real.

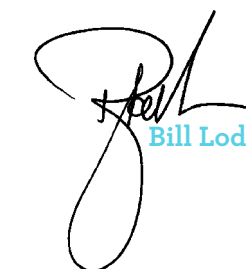
As you read this Impact Report, dance if you feel led because God is good and most worthy of our praise!

Our revenue streams are financially strong, and our internal discipline to control costs is sharp. God has and continues to bless us in ways that are sustainable so we can be faithful to our mission and vision over the long haul.

Elim could not be what it is without the amazing staff that serves so faithfully every day. Their love and dedication are particularly noteworthy in this very competitive labor market. In fiscal year 2023, Elim's revenue (and costs) were both short of budget because we could not staff at the levels needed to serve the people on our waiting list. While we continue our diligent efforts at staff retention and recruitment, we are very grateful for our dedicated staff who step up to equip our students and adult participants to thrive in their community.

Lives are being transformed at Elim every day! The testimonies of Fred, Kim, and Vanessa in this report are what Elim is all about. Elim exists to equip our students and adult participants to thrive in their community, and by God's grace, that is exactly what Elim continues to do.

Thank you for being an important conduit of God's faithfulness to Elim!

  
Bill Lodewyk | President

# Elim Christian Services: Our Year in Review 2022-2023





## Connect.

As one of Elim's first students and longtime residents of Bethshan, Fred is still going to Elim's Adults Services program every day of the week at the age of 84.

Fred started attending Elim as a student when his previous school system could no longer provide the services he needed to thrive. To make sure Fred could get to Elim, one of Elim's dedicated teachers picked him up from a bus stop every morning so he could make it to class!

As an adult, Fred now enjoys participating in Elim's Adult Services program. Fred loves to spend his time watching sporting events and rooting for his favorite teams, the White Sox, Blackhawks, and Notre Dame Football! He carries around a notebook to track scores from different games and any other moments he wants to remember.

His faith has remained strong while at Elim, and the Christian impact Elim has had on Fred's life has helped his faith to stay strong. He loves attending church, praying, and giving back to those around him through working on HOPE Packs at Elim.

"Being at Elim, Fred knows right from wrong, is content, and is always at peace," Fred's sister-in-law, Diana, shares with us. "Elim has played a huge part in Fred's development, and it is a wonderful way for Fred to live."

## Engage.

When Vanessa aged out of her old school program seven years ago, her family searched for a place that would foster and grow all her God-given abilities – and they found Elim.

She is enrolled in Elim's Crossroads program, focusing on learning vocational skills, such as social skills, personal health, and domestics, that will equip her to lead a successful life at Elim and beyond.

Besides her eagerness to learn and be in class, Vanessa radiates kindness and always finds ways to help around the classroom. "She is always thinking of others," Mr. Dave, Vanessa's teacher, shares. Vanessa is known to be quite the team player, oftentimes being the first to volunteer to assist her classmates however she can.

Vanessa's family has noticed gradual changes to her growth and ability to do things independently since she has been at Elim. Elim's resources and talented professionals worked with Vanessa to grow in more ways than her family could have imagined.

She practices more self-care at home, like combing her hair and brushing her teeth, and finds ways to help out around the house.

Vanessa and her family are excited to see how she will continue growing in her independence – here at Elim and beyond.

## Thrive.

Knowing where you are meant to be is not always easy, but Kim has always been confident that Elim is the place where she will thrive.

Kim started attending Elim when she was just five years old. She transferred into her public school system for a while, but quickly, her family realized that Elim was the better fit for her. "Kim has been very influenced by the Christian community at Elim, and it was a big reason that she came back," her mother, Maria, shares. "The people at Elim are so caring and kind. They treat her and others with a very loving heart."

Once Kim graduated from school, she started attending Elim's Adult Services program in 2001 – and she has been there ever since!

Kim loves being involved in Elim's HOPE Packs program putting together school kits that get sent to students in the area. She knows that her work is making a difference in the community, and she loves having the chance to give back.

Kim's great work ethic doesn't end at HOPE Packs – she has her own business as one of Elim's Entrepreneurs. She knits scarves and creates and sews burp cloths and baby clothes in several different designs.

"Kim has learned how to be a part of a team, to get things done, and how to have a great work ethic," Maria says. "I believe her life has been changed by Elim."

# We Are Celebrating.

When I first started working here in 2010, I thought Elim would be a good stepping-stone and resume builder and I thought I would only stay a couple of years. Well, here I am nearly 13 years later and **STILL IN LOVE WITH THIS AMAZING PLACE!** The atmosphere here is more than just a good work environment. This place and these people (both students and staff) are like my **SECOND HOME** and some of my co-workers have become like family to me.

~ An Elim staff member

Our daughter is celebrating **25 YEARS AT ELIM.** The **SPIRIT-FILLED STAFF** she has met and been encouraged by are countless. Prayers for Elim to continue the mission we are all so grateful for.

~ An Elim parent

I've had so many **GREAT MEMORIES AT ELIM.** I love taking the school bus and seeing my teachers and friends every day.

~ An Elim student

"I love my classes. I love the game room, going on walks, going on field trips, **PRAYING AT LUNCH** with my friends, and my computer and music class. I love my job and **I LOVE BEING AT ELIM!**"

~ An Elim adult participant

**200+**

adults served on Elim's Crestwood and Orland Park campuses

**60**

different school districts send students to Elim for essential services

**15,927**

HOPE Packs sent to provide food, school supplies, and messages of HOPE

**84%**

of students rely on communication devices to interact with their teachers and peers

**199**

students are served on Elim's campus

**100%**

of Elim's students and adults rely on the year-round, life-changing programming you help provide!

**75%**

of adults at Elim participate in volunteer opportunities in the community

**71%**

of students have 1:1 paraprofessional support, with an average class size of 6 students per classroom

**359**

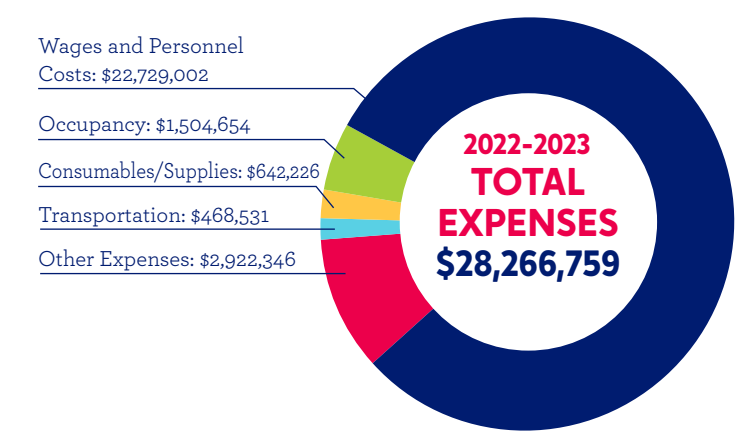
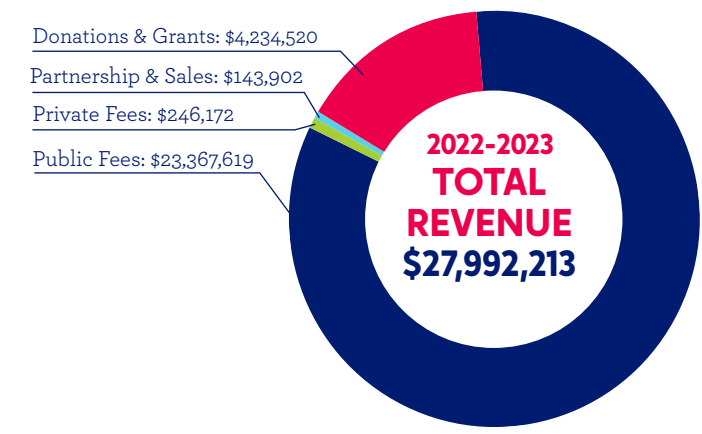
staff members directly support Elim's mission

To find a list of all gifts made in honor or memoriam, visit: [elimcs.org/AnnualReport](http://elimcs.org/AnnualReport)

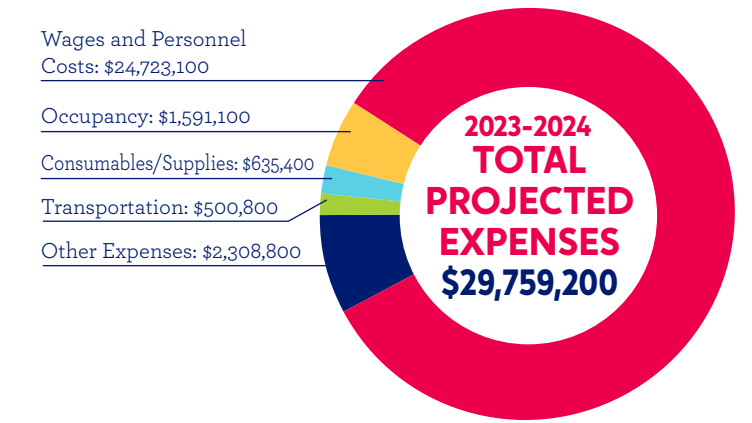
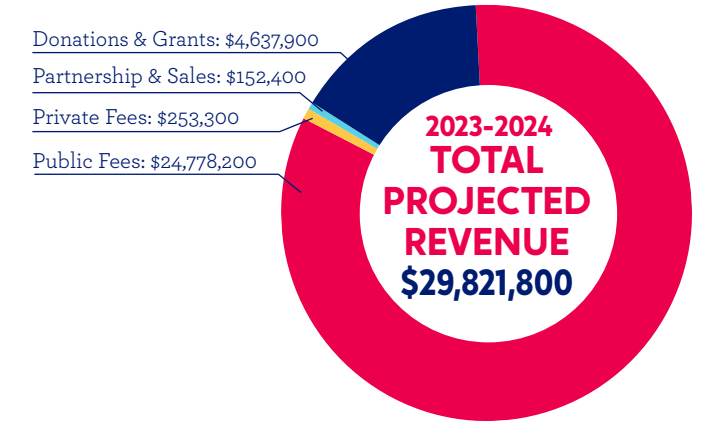
Thank you for your generosity in support of our mission!



## OUR FINANCIAL STATEMENT 2022-2023



## OUR FINANCIAL PROJECTIONS 2023-2024



**Connect. Engage. Thrive.**



Thank you for your partnership in Elim's mission! Because of you, children and adults with disabilities at Elim, in your community, and worldwide are being equipped to reach their full potential. Here are other ways to get involved in this life-changing work:

- 

**VOLUNTEER**  
Join us for a one-day event or for a weekly opportunity and experience Elim and its mission in a whole new way! Learn more at [www.elimcs.org/volunteer](http://www.elimcs.org/volunteer).
- 

**GET YOUR CHURCH, BUSINESS, AND SCHOOL INVOLVED**  
Get involved in a HOPE Packs campaign or explore other opportunities at [www.elimcs.org/get-involved](http://www.elimcs.org/get-involved).
- 

**JOIN THE ELIM LEGACY SOCIETY**  
Elim Legacy supporters are individuals that have decided to leave a legacy at Elim by giving a planned gift or by naming Elim Christian Services as a beneficiary in their will. If you would like to join the Elim Legacy Society, please contact Dan Vander Plaats (708-293-6518) or you can contact Elim's partner agency, the Barnabas Foundation (toll free at 888-448-3040). The Barnabas Foundation can help you plan your gifts for maximum impact.



**TOGETHER, WE ARE CELEBRATING.**

Your partnership is crucial to Elim's mission. Thank you for your kindness and generosity! Please give today at [elimcs.org/donate](https://elimcs.org/donate)



13020 S Central Avenue | Crestwood, IL 60418  
708.389.0555 | [elimcs.org](https://elimcs.org)