



Elim 
We are learning.



2020-2021 Annual Report


WHO IS ELIM?



ELIM CHRISTIAN SERVICES EQUIPS PEOPLE WITH DISABILITIES TO PURSUE THEIR GOD-GIVEN POTENTIAL.


MISSION Elim equips people with disabilities to pursue their God-given potential by offering person-centered services and partnering with their communities.

VISION People with disabilities thriving in their communities.



CORE VALUES

- We are Christ-centered.
- We all have value and purpose.
- We are a learning and sharing community.





WE ARE LEARNING.

“My grace is sufficient for you, for my strength is made perfect in weakness.”

—2 Corinthians 12:9

The theme of this year’s Annual Report is “We are Learning.” What makes this theme so appropriate is that it reinforces one of Elim’s core values of *being a learning and sharing community*. This year’s theme is also appropriate because learning has been such a big part of our lived experience this past year.

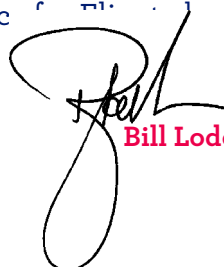
Scripture is filled with examples of learning becoming much more effective when circumstances motivate the learner to learn. The adverse circumstances that Abraham, Moses, Job, David, and Paul faced motivated them to learn, and learn they did.

2021, with all the adverse circumstances ushered in by the pandemic, motivated us at Elim to learn, and learn we did.

Here are just a few of the things that we by God’s grace have learned:

- We learned that with all due respect to the great work that we do at Elim, God is in control.
- We learned what an amazing, dedicated, and resilient staff we have at Elim, men and women who do whatever it takes to see that our students and adult participants thrive.
- We learned that while there are so many creative and valid ways to connect, there is no substitute for in-person connecting and learning.
- We learned how resilient and supportive our participants and their caregivers are.
- We learned how to better manage change because we got such a steady stream of it.
- We learned that we are stronger together, and that there are times when together is the only way through.
- We learned that in a year of unprecedented financial headwinds, God faithfully provided for all our needs. Elim’s support base is strong and growing!

As you read through this report, I invite you to be reminded of how good our God is. While the pandemic may have brought us to our knees, it motivated us enough to learn that on our knees is the best place for all of us to be.



Bill Lodewyk | President



ELIM CHRISTIAN SERVICES



JULY:

Hundreds of volunteers helped pack nearly 9,000 HOPE Packs of essential school supplies for children in need in the Chicago area during the pandemic.



OCTOBER:

Elim bridged in-person and remote learning by splitting our school population into two groups who took turns coming to campus. One group came on Mondays and Tuesdays and the other group came on Thursdays and Fridays.



AUGUST:

Adult Services re-opened to in-person services, safely serving 50% of its enrollees.



SEPTEMBER:

A successful and socially-distanced "No Fest" Dutch Fest was held in place of Elim's Annual Dutch Fest.



NOVEMBER:

Elim Legacy Sustainers Society reaches 85 members who have included Elim in their estate plans. Members of the Elim Legacy Sustainers Society help ensure Elim's financial strength well into the future.

A YEAR IN REVIEW: 2020-2021



APRIL:

Adult Services achieved 80% capacity and welcomed back some community-based participants.



MAY:

Elim's school returns to full in-person services five days a week for all enrollees. Elim Learning returns to full in-person Employee Onboarding in our newly-renovated Learning Center.



MAY:

Board of Directors approves new strategic plan

that focuses on community engagement, improvements throughout the school, and retention and recruitment of skilled staff.



JUNE:

Thanks to hundreds of generous supporters, Elim began reconstruction of its iconic covered bridge.



CONNECT

When I first toured Elim I knew right away this was the place for Luke. Luke uses a wheelchair, is nonverbal, and has a visual impairment. When he first got to Elim he was provided with a one-on-one aid and a communication device. He started getting the interaction and support he needed. Luke has been at Elim for six years now.

The attention to detail at Elim is just so amazing, between the adaptive library and all the adaptive technology. And also, the pool! Some people might think this is a luxury, but it is so therapeutic for Luke's body.

I feel like Elim gave Luke opportunities to learn and grow that he would not have gotten otherwise, and I think that's a result of the teachers and therapists and aides and adaptations and resources Elim is able to offer.

Let me tell you, I got this feeling when I toured – it was like this was heaven on earth for anyone, but especially for someone like Luke. Somehow, some way I was going to get Luke into school there because Elim was meant for him.

-Lori Lott (Luke's mom)

ENGAGE

Alia started school at a very young age. She loved the program she was in, but it didn't work for her, resulting in her having to go to a different school. It just wasn't the right environment for her.

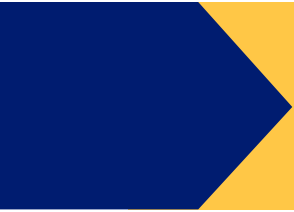
I had never heard of Elim. I didn't know what it was. They said they wanted Alia to go to a school that provided the support she needs. The first time I went, it was amazing! The whole school was so inclusive. The class sizes, bikes in the hallway, and the teachers.

The summer before she came to Elim, I was at a conference. When she started at Elim, immediately she started using it like a rock star. She started with two words, and asking for things, and then progress.

I think it was because all of the other kids were in her classroom, and from her teachers and the team! I mean, how amazing is it that she has a team that works for her, thanks to Elim.

-Halina Ogodry (Alia's mom)





ng age; she had just turned 3. We
t the class size was too much for
t pulled away from her learning.
ent for her.

t know it existed. Our district
school where she could get all
time we came to Elim it was
set up for her, there were smaller
and textured walls.

Elim, her first word was juice.
diately she was given a device
ar. She started saying one word,
nings. She has made so much

ne-on-one attention she got in
apists and her team. She has a
that our daughter has an entire
o Elim.



THRIVE

When I was young, the doctors said that a person like me doesn't belong in a normal school, that a person like me would need one-on-one attention, and it hurt my mom. But she didn't give up hope; she knew that there was more than what meets the eye.

At first, I wasn't sure if Elim was the right place for me, but I prayed in my heart just like my grandfather taught me, to feel what's right and don't worry about things because God has ways of working it out.

Elim taught me how to read and how to spell. But the teachers also taught me that I have a purpose. I also learned that things can get bad if you let them, but they can also get good if you allow them to, if you just keep going strong.

After I graduated from Elim, I went on to different jobs. I love being a member of the community and working hard to have a chance to earn money. Elim has given me that chance. Remember, God has plans for you.

-Darrell (Elim adult participant)

“My daughter was a student at Elim for 19 years, and now **EVERY DAY WE SEE THE RESULTS** of an Elim education and training. It is our desire to continue to **MAKE THIS EXPERIENCE AVAILABLE FOR OTHERS**, and volunteering at Elim provides that opportunity.”

~ Judy Van Til (an Elim supporter)

“Elim has given our family the **PRICELESS GIFTS OF JOY AND PEACE** in knowing that Brooke is loved, safe, and is being equipped with the opportunities she needs **TO BE ALL GOD CREATED HER TO BE.**”

~ Denise, mom to Brooke
(an Elim student)

WE ARE LEARNING.

“I was very nervous about starting a new position at Elim...The entire **TRAINING TEAM WAS AMAZING**. Everyone was kind, helpful, and **VERY KNOWLEDGEABLE**. This is truly the first job I have worked where I received **DETAILED TRAINING** like the training I received at Elim.”

~ A new Elim employee

“I love the opportunities Elim provides me. I really enjoy the work opportunities. **IT BRINGS JOY TO ME** and I feel very blessed to be where I am today.”

~ Cindy (an adult participant)



90,652

HOPE Packs sent to provide food, school supplies, and messages of HOPE – locally and around the world

200+

adults served on Elim's Crestwood and Orland Park campuses

68

school districts that send students to Elim to receive essential services

32

Paraprofessionals have been mentored by 4 Elim Paraprofessional Mentors (since May 2021)

100%

of Elim's students and adults have a personalized growth plan

220+

students reached on Elim's campus and hundreds more through partnerships and HOPE Packs

90%

of our adults positively impact neighboring communities through work and volunteer opportunities

23

partnerships through Elim Learning with schools and ministries in the US, India, Egypt, Zimbabwe, Nicaragua, South Africa, Mexico, & Lebanon

100%

of Elim's students and adults rely on the year-round, life-changing programming you help provide!

To find a list of all
gifts made in honor
or memoriam, Visit:

elimcs.org/AnnualReport

Thank you for your
generosity in support
of our mission!



CONNECT. ENGAGE.

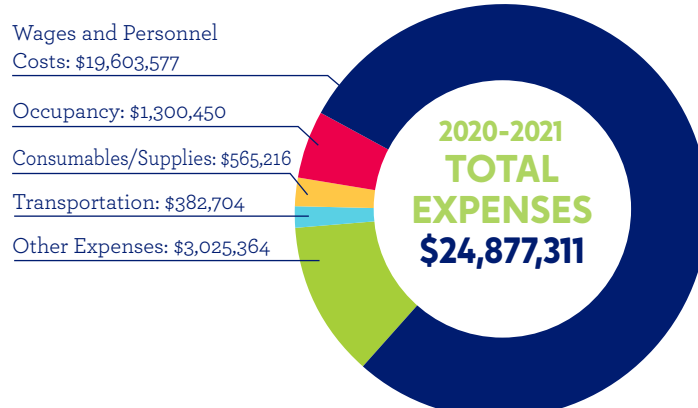
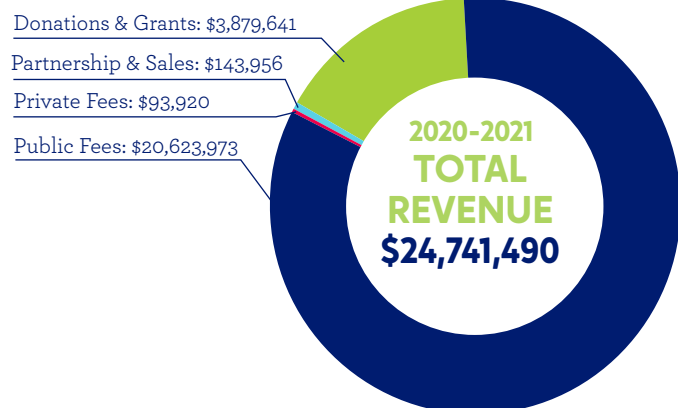
THRIVE.

CONNECT ENGAGE THRIVE

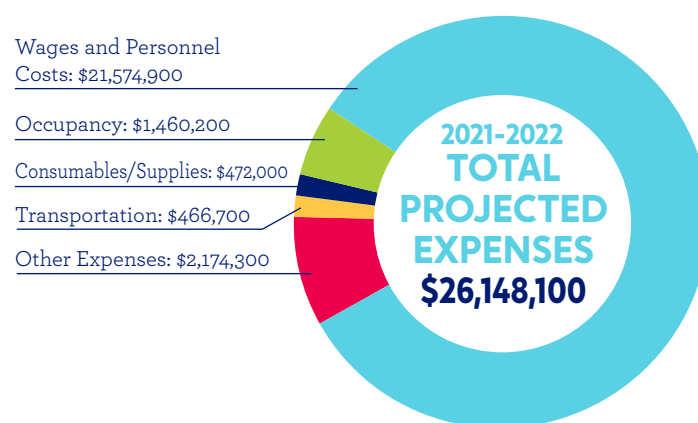
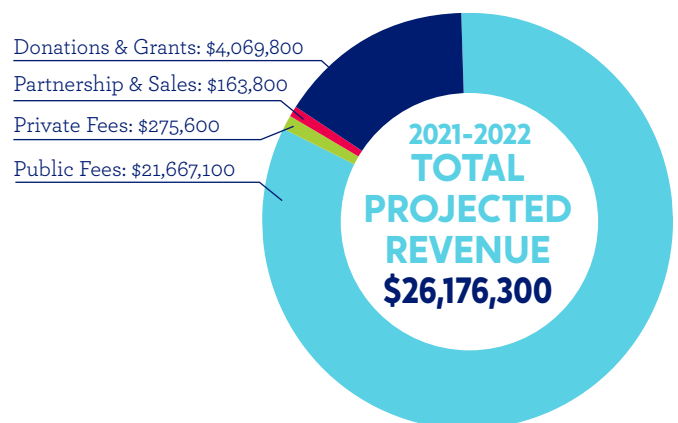
WE ARE Elim

Thank you for your partnership in Elim's mission!
Because of you, children and adults with disabilities
at Elim, in your community, and worldwide are being
equipped to reach their full potential. Here are other
ways to get involved in this life-changing work:

OUR FINANCIAL STATEMENT 2020-2021



OUR FINANCIAL PROJECTIONS 2021-2022



VOLUNTEER

Join us for a one-day event or for a weekly opportunity and experience Elim and its mission in a whole new way! Learn more at www.elimcs.org/volunteer.



GET YOUR CHURCH, BUSINESS, AND SCHOOL INVOLVED

Get involved in a HOPE Packs campaign, support your students through our Learning resources, or explore other opportunities at www.elimcs.org/get-involved.



BECOME AN ELIM LEGACY SUSTAINER

Elim Sustainers are individuals that have decided to leave a legacy at Elim by giving a planned gift or by naming Elim Christian Services as a beneficiary in their will. If you would like to become an Elim Sustainer, please contact Bob Marsh (708-293-6513) or you can contact Elim's partner agency, the Barnabas Foundation (toll free at 888-448-3040). The Barnabas Foundation can help you plan your gifts for maximum impact!



WE ARE LEARNING...

TOGETHER.



Your partnership is crucial to Elim's mission. Please give today. Thank you for your kindness and generosity!

Elim

13020 S Central Avenue
Crestwood, IL 60418
708.389.0555 | elimcs.org