



**CONNECT.
ENGAGE.
THRIVE.**

Elim
We believe.



2019-2020 Annual Report

ELIM CHRISTIAN SERVICES EQUIPS PEOPLE WITH DISABILITIES TO PURSUE THEIR GOD-GIVEN POTENTIAL.

MISSION Elim equips people with disabilities to pursue their God-given potential by offering person-centered services and partnering with their communities.

VISION People with disabilities thriving in their communities.

CORE VALUES
We are Christ-centered.
We all have value and purpose.
We are a learning and sharing community.



THROUGH EVERYTHING, WE BELIEVE.

“The one who plants in response to God, letting God’s Spirit do the growth work in them, harvests a crop of real life, eternal life.”
–Galatians 6:8 (MSG)

I am so very pleased to share with you Elim’s 2020 Annual Report. It is a testimony of praise for the growth work that God’s Spirit is doing through Elim, and how God continues to use you to harvest a crop of real life, eternal life.

The theme of this annual report is “We Believe.” At Elim we *believe* that if God’s Spirit is at the core of our efforts to connect, engage, and help people thrive, then Elim’s vision of people with disabilities thriving in their community will become reality.

For us at Elim, thriving in community means belonging to and contributing to community – wherever that is. In this report, you will be particularly blessed by the testimonies of Robert, Brooke, and Jenny as they share how they belong and contribute to their respective communities. Knowing that God’s Spirit harvests your prayers and support of Elim to make these testimonies possible is something that I pray affirms you and the contributions you are making to build community.

Thank you for the many ways that you help Elim to live out belonging and contributing as you partner with Elim.

This “We Believe” report also highlights God’s financial provision for Elim in fiscal year 2020. In these unprecedented times, Elim remains fiscally strong. While enrollment and staffing are in constant motion, we give thanks to God that our public and private funding sources remain steadfast.

As we enter into fiscal year 2021, we anticipate our fair share of challenges. COVID-19 seems intent on making that a certainty. That said, Elim will persevere because of our amazing staff and faithful partners like you who “plant in response to God, letting God’s Spirit do the growth work that harvests a crop of real life, eternal life.”


Bill Lodewyk | President

2019-2020 Elim Christian Services



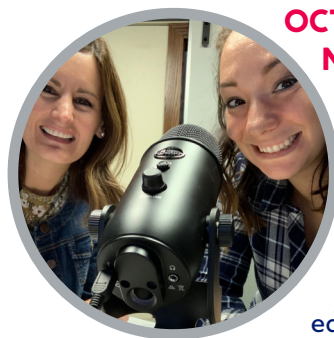
JULY:

Elim adults pack and distribute nearly 10,000 HOPE Packs of essential school supplies for children in need in the Chicago area.



AUGUST:

After a year-long process, Elim officially adopts a revised brand to better reflect Elim's mission of connecting individuals, engaging families, and seeing individuals with disabilities thriving in their communities.



OCTOBER & NOVEMBER:

Elim Learning launches the Elim Thriving Podcast and the Elim Book Club! These platforms bring educators, parents, students, and community members together to learn and grow on topics related to disability and special education.



SEPTEMBER:

Elim dedicates Office of Nursing Cove in memory of longtime nurse Cathy Larsen.



JANUARY & FEBRUARY:

New curriculum is implemented in Elim's school program, including a "Beyond Expectations" curriculum for classrooms serving students with more profound needs.



MARCH:

The COVID-19 pandemic requires all of Elim's programs to suddenly transfer to remote learning.

Elim's teachers, therapists, and direct support professionals utilize multiple digital platforms to continue to engage the students and adults they serve in pursuing their individual goals.



APRIL:

Amidst the pandemic and continued remote learning requirements, Elim's students, adults, families, and staff rally together through a virtual "Spirit Week," staying connected through photos, videos, and other posts that proudly display their #WeAreElim spirit.



MAY:

Elim's historic covered bridge, a hallmark of Elim's campus for over 50 years, collapses due to a significant storm and flooding.



JUNE & JULY:

Remote learning continues through Elim's summer school session and year-round Adult Services programming. Elim's staff works hard to prepare for in-person programming, with adults expected to return to campus in August and students expected to return in the fall.

CONNECT

Many years ago, I came to check out Elim as a place for my son, Bobby. There was peace through the whole area. It was amazing. Bobby was happy at Elim from day one.

I could tell that they loved him. They saw who he was as a person and they connected him to what he needed – therapy, job training. They used language boards to help him learn how to communicate what he wanted.

Even today, the employees at Elim surprise me all the time with how well they know Bobby and how much they do to help him express himself and follow his interests. I have never ever in 43 years ever had a complaint about anything. Elim is the perfect place.

You send your child out somewhere and you worry if will he be okay, and I never once have had that worry.

That's why Elim means so much to me and my family, because they connected to this person, and they connected him to other people and to a whole new world. In fact, I would have to say I got a whole new Bobby out of the deal. But I would also say that the world got a chance to know the real Bobby because of Elim.

-Barb (Bobby's Mom)

ENGAGE

At the time I first visited Elim, Brooke could not talk, and the doctors told us she might never communicate verbally. With the help of Elim's amazing staff and available technology, by the end of middle school Brooke learned to express her wants and needs with the use of a communication device. She even started saying "mommy," "daddy," and "bubby" (her name for her adoring twin brother). You can't imagine the joy we had in hearing her say our names for the first time!

Brooke is now 20 years old, and each day Elim's staff continues to equip her with the love, support, and skills for her to work with me in my office doing things like paper shredding, filing, and using her device to communicate with clients.

I am so proud to say that because of Elim, Brooke has been able to exceed beyond the expectations set for her at an early age. Elim has given our family the priceless gifts of joy and peace in knowing that she is loved, safe, and is being equipped with the opportunities she needs to be all God created her to be.

-Denise (Brooke's Mom)

THRIVE

When I was told I was going to go to a new school, a place called Elim, I wasn't really excited about it. In fact, I actually hid under the desk when I first got there because I was really nervous.

When I look back on it now, I feel like this was the first place, outside of my family, that understood me. They helped me learn things I wasn't able to learn at other schools. And they held my hand and helped me through every step. I wasn't hiding under a desk anymore.

They wanted me to stop hiding my gifts, and instead to share them. They helped me to speak in front of a church service about what God has done in my life, and they helped me train to try out for the United States Special Olympics Volleyball Team. And I made it! This all happened because Elim believed in me. It happened because they saw that I was worth something. They were committed to learning about me and helping me learn how to thrive, instead of hide.

I have now been working as the school receptionist for 18 years. That's right, Jenny, the girl who hid under her desk because she was afraid of new people, is now the first person who greets you when you come to Elim, all because of Elim and because of people like you.

-Jenny



WE BELIEVE.

“On our visit to Elim, we witnessed an **ATMOSPHERE THAT PROVIDED US WITH HOPE AND ENCOURAGEMENT**. Not only was there a quality program with amazing opportunities for the students. Today, with new confidence and comfort, not only are we able to see more of what’s inside of Ray, we can enjoy more family outings and activities together.”

~ Ray’s mom

“Coming to Elim was a **GOD-GIVEN OPPORTUNITY**. I have loved everything about Elim – classroom work, community, sports, recreations, chapel, and my teachers and para-professionals.”

~ Derek, an Elim graduate

“I just want to say something to you today. I just want you to know how much I appreciate that you would support Elim and learn about it today, and **I AM SO THANKFUL FOR YOU**.

It means so much to me that you care about me and my friends.”

~ Brett, an adult participant

“Being a special needs parent can make you feel alone. No matter how amazing your family and friends are and try to be, they just don’t get it. **ELIM GETS IT**. Elim is not just ‘Lily’s school,’ it is our third family.”

~ Lily’s mom

218+

adults served on Elim’s Crestwood and Orland Park campuses

133,923

HOPE Packs sent to provide food, school supplies, and messages of HOPE – locally and around the world

72

school districts that Elim students come from to receive essential services

100%

of Elim’s students and adults rely on the year-round, life-changing programming you help provide!

90%

of our adults bless our communities through volunteer and work opportunities

250+

students reached on Elim’s campus and hundreds more through partnerships and HOPE Packs

23

partnerships through Elim Learning with schools and ministries in the US, India, Egypt, Zimbabwe, Nicaragua, South Africa, Mexico, & Lebanon

100%

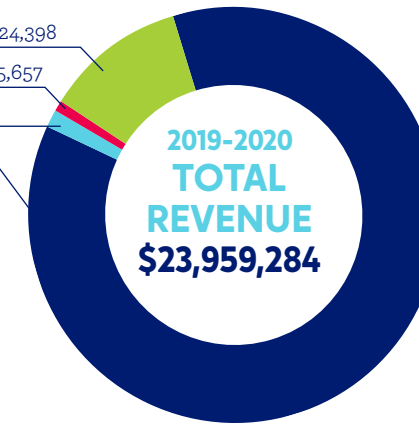
of students and adults at Elim have a personalized growth plan.



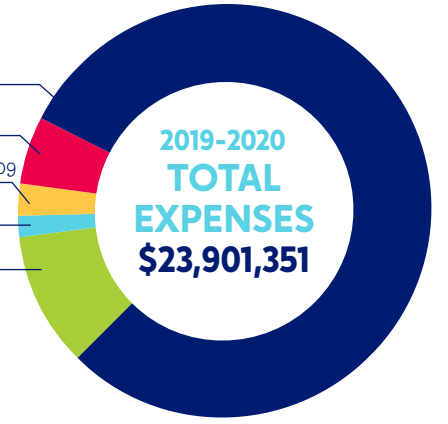
Visit www.elimcs.org/AnnualReport to find a list of all gifts made in honor or memoriam. Thank you for your generosity in support of this mission!

OUR FINANCIAL STATEMENT 2019-2020

Donations & Grants: \$2,724,398
Partnership & Sales: \$145,657
Private Fees: \$358,744
Public Fees: \$20,730,485

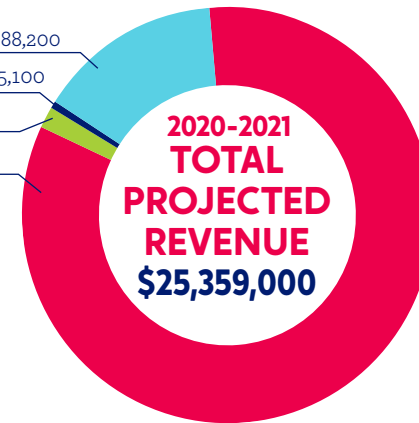


Wages and Personnel
Costs: \$19,484,900
Occupancy - \$1,297,365
Consumables/Supplies: \$559,209
Transportation: \$411,172
Other Expenses: \$2,148,705

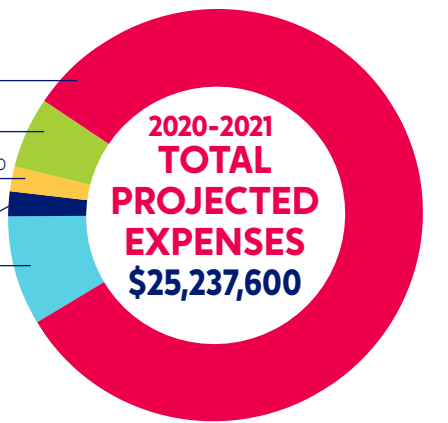


OUR FINANCIAL PROJECTIONS 2020-2021

Donations & Grants: \$3,688,200
Partnership & Sales: \$165,100
Private Fees: \$378,600
Public Fees: \$21,127,100



Wages and Personnel
Costs: \$20,703,100
Occupancy: \$1,400,300
Consumables/Supplies: \$513,900
Transportation: \$457,300
Other Expenses: \$2,163,000



WE ARE **Elim**

Thank you for your partnership in Elim's mission! Because of you, children and adults with disabilities at Elim, in your community, and worldwide are being equipped to reach their full potential. Here are other ways to get involved in this life-changing work:



VOLUNTEER

Join us for a one-day event or for a weekly opportunity and experience Elim and its mission in a whole new way! Learn more at www.elimcs.org/volunteer.



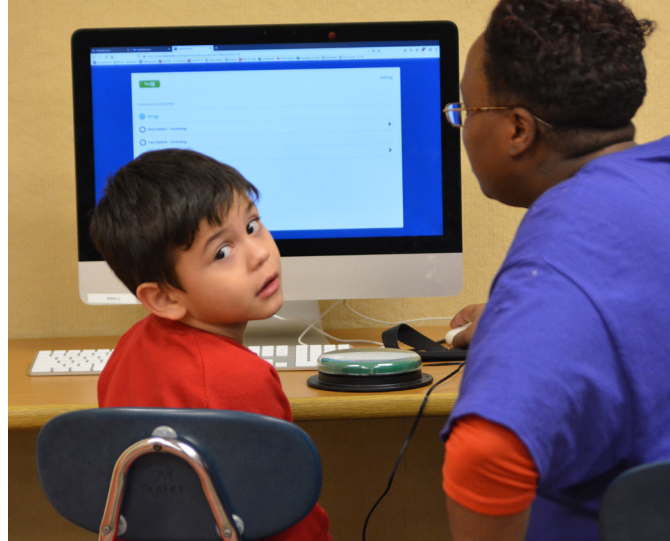
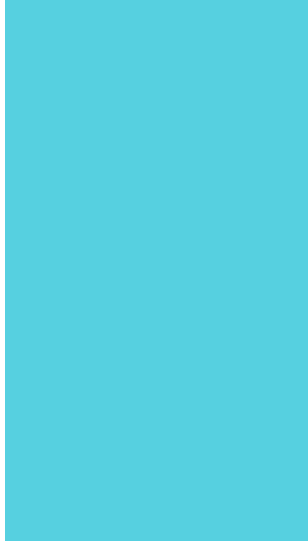
GET YOUR CHURCH, BUSINESS, AND SCHOOL INVOLVED

Get involved in a HOPE Packs campaign, support your students through our Learning resources, or explore other opportunities at www.elimcs.org/get-involved.



BECOME AN ELIM SUSTAINER

Elim Sustainers are individuals that have decided to leave a legacy at Elim by giving a planned gift or by naming Elim Christian Services as a beneficiary in their will. If you would like to become an Elim Sustainer, please contact Bob Marsh (708-293-6513) or you can contact Elim's partner agency, the Barnabas Foundation (toll free at 888-448-3040). The Barnabas Foundation can help you plan your gifts for maximum impact!



TOGETHER, WE BELIEVE.

Your partnership is crucial to
Elim's mission. Please give
today. Thank you for your
kindness and generosity!



13020 S Central Avenue | Crestwood, IL 60418
708.389.0555 | elimcs.org